

- It sells automatic towel for reliable cleaning in cars and it works 24/7 long-term.
- It works with coins and gives the product to the user from the product reservoir of consistently the same quality car drying cloth.



Key Features

- LINK and Analogue/Pulse servo drives models
- High-response frequency of 1 kHz
- Auto-tuning for easy and quick start-up
- Vibration suppression
- Positioning, speed or torque control
- Separate power and control power supply
- Fast and accurate positioning
- Incremental and absolute encoder

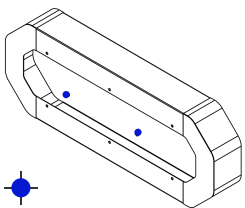


Accessories



Accessories	Art. No.	P. Qty
230V Connector plug	0672 940 375	1
Connection USB Cable	0672 940 449	

Floor Connection



Cross marked, the fixture of the assembly is fully attached to the ground point with 8 steel dowels.

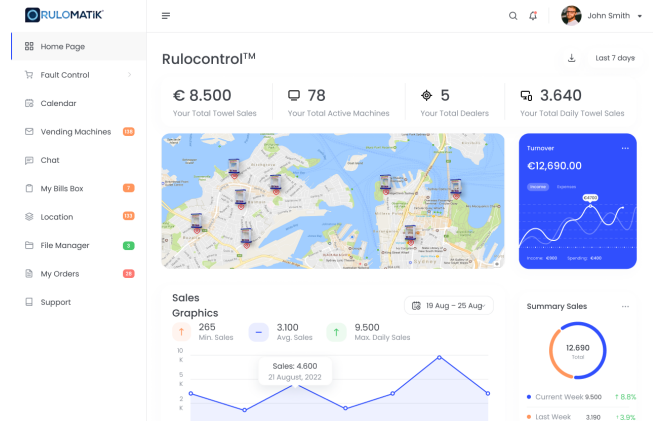
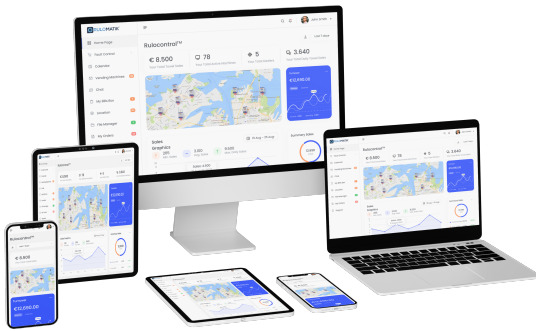
HS CODE / NO / NUMBER : 84.76.89.00.00

Electronic	
Nominal Voltage	12 V/DC
IP Protection Class	IP67
Work Temperature	-15°C, +40°C
Length x Width x Depth	164 × 94 × 32 CM
Art. No.	0612090P
P. Qt.	1
Auto Range	No
Digital Sensor Reduction	DNR
Included	Power cable, Mounting Apparatus, Lock system, Balance bar
L.A. Length	20/40/80
Payment Module	Coin, token
	RFID, NFC, Banknotes, coin and money return systems, credit card, smart card (Working without Money) (Optional)
Demist	Optional electric demisting system
Microprocessor	High Performance Microprocessor EXECUTIVE Protocol Support
LOG	Device cloning, statistics, software update and LOG retrieval feature with USB memory
LED	High quality advertising space with LED lighting
Design	Extra durability and locked cash box with robust design and high reliability locking mechanism
Material	Corrosion-resistant Galvanized sheet Material and Electrostatic Powder Paint
Test Equipment	BITE (Built-in Test Equipment) problem detection and advanced error warning system.
Port	RS485 port (IR Product Sensor and Other Applications)
Access and Control	GSM / GPRS Web Based Remote PC Access and Control Opportunity (Telemetry) – Optional
Power Saving Mode	Reliable operation with product sensor, Low consumption with Continuous Power Saving mode
Mechanic	
High data storage capacity with EEPROM setting, storing of statistics and LOG records in flash memory. (Optional)	
Fault - Log, record keeping feature	
High performance microprocessor controlled MDB/ EXECUTIVE Protocol Support	
Advanced hardware interfaces with MDB protocol	
EEPROM (external socket)	
Software Update with Bootloader	
Connect to PC via Cable and Master-Slave Work with RS232 Interface · Optional	
Function	
Compatible with currencies of more than 200 countries	
High-quality advertising space with	
Exclusive Rulomatik design.	
IP67 protection against water and dust.	
LED lighting.	
Software Update with Boot via USB or PC.	
Use of ROHS compliant and Human Health Safe NSF Certified materials.	
International norms, CE conformity and ISO 9001: 2008 QMS production standard.	

Live Tracking

With the RULOCONTROL application, you can instantly monitor the instant status information of all Rulomatik automatic vending machines from anywhere and from any device with internet connection.

- Live tracking
- Vending machine tracking
- Mobile access support
- Report grouping
- History tracking records
- Real time activity management
- Local server support
- Remote automat controls
- Vending restrictions



Headquarters Address:

GOSAB, Dumlupınar Mahallesi Selçuk Caddesi No:1 16285 PK , Nilüfer Bursa, TR

Contact Info:

+90 850 650 1111 Pbx , +90 224 443 0115 (Local Call)

infoline@rulomatikcompany.com - www.rulomatik.com



LEGAL WARNING: All information and related documents are believed to be accurate and the information is based on well-meaning and reliable sources. But Rulomatik does not make any representations, guarantees or commitments regarding this information. Accordingly, the companies or their members of the Board of Directors or their staff, consultants or employees shall be liable for any direct or indirect loss of a person / company as a result of any information or communication transmitted or not under the scope of this report is not responsible for the damage.